



Surgical & Sterilization

PRODUCTS, DEVICES & SYSTEMS



ISO 13485: 2016

FDA Registered Facility





RICA Surgical Products, Inc. is an FDA registered facility and ISO 13485:2016 certified surgical instrument manufacturer and medical products marketer based in Schiller Park, Illinois. Since 1984, RICA has been providing high quality surgical instruments, medical equipment and supplies to surgeons, veterinarians, medical hospitals and other health care professionals. The foundation of RICA's business is our commitment to provide you with high quality products at an excellent value.

RICA offers a wide selection of time-saving devices, and its SteriBest® brand of sterilization products. This catalog represents a sampling of the various types of time-saving devices and other useful products RICA can provide. If you are looking for a product not listed in this catalog, visit our website at www.ricasurgical.com or contact our office at 1-800-889-3218 for availability and current pricing. We pride ourselves on being able to find the right instrument or product you need for your practice.

For pricing on any of the products included in this catalog, please refer to the current RICA Surgical Products price list, or visit our websites at www.ricasurgical.com.

Thank you for reviewing our product offerings. We appreciate your interest in our surgical suite products. RICA will work hard to continue to earn your business by providing you with excellent customer service and a fantastic value for your purchases.

TABLE OF CONTENTS

STERILIZATION PRODUCTS & SYSTEMS

| | |
|--|---------|
| SteriBest® Instrument Trays | 3 - 6 |
| Silicone Bar Holders / Pin Mats..... | 7 |
| Instrument Stringers..... | 8 - 11 |
| Pouch Sterilization Racks..... | 12 - 13 |
| Latches for OEM Sterilization & Surgical Trays | 14 - 15 |
| Universal Scope & Instrument Protection System | 16 - 26 |
| Stainless Steel Mesh Baskets | 27 |
| Instrument Enzymatic Cleaning Solution | 28 |
| Autoclave Gloves..... | 29 |

GENERAL INFORMATION

| | |
|---|----|
| Contact Information, How To Order, Payments, Return Goods Policy..... | 30 |
| SteriBest® Warranty..... | 30 |



INSTRUMENT TRAYS WITH PIN MATS OR SILICONE BAR HOLDERS

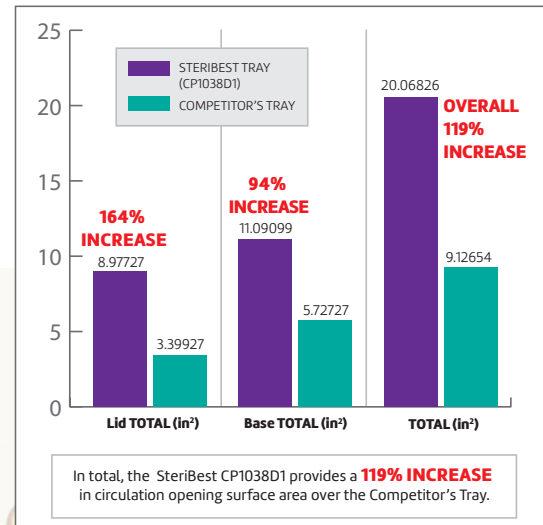
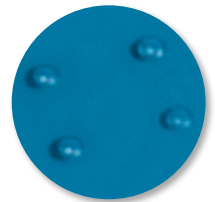
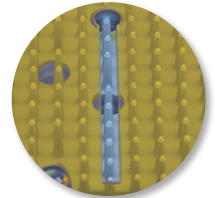
SteriBest® Instrument Trays are designed to hold and protect delicate instruments during sterilization, storage and transportation. Trays are available in a variety of sizes and styles, in single and double tiers, all with silicone mats or holders for added protection. Trays are made in the USA of lightweight, strong and durable Ultem®, a high performance polymer, that is heat and chemically resistant and compatible with steam and gas-plasma sterilization, to ensure long lasting durability. The base of each tray contains raised nodes which, when coupled with the additional ventilation in our trays, facilitate the circulation of steam and aid in faster drying. Transparent lids allow for easy identification of tray contents. Each lid is slotted for increased steam penetration and more rapid drying. The advanced design of the tray base and lid helps eliminate “wet pack”.

- Advanced design allows for faster sterilization and drying.
- Designed to protect delicate instruments during sterilization and storage.
- Made from the polymer Ultem® to ensure strength and long lasting durability.
- Transparent lids for easy identification of contents.
- Trays are stackable for storage.



ADVANCED DESIGN FEATURES:

- **Slotted lids and bases** facilitate circulation and rapid drying.
- **Nodes on bases** permit better steam circulation under the mats.



INDEPENDENT TEST LAB VALIDATIONS:

• DRY TIME STUDY*

Independent lab dry time results validated 25 minutes on all trays, giving you guidance to set your parameters to minimize wet pack.

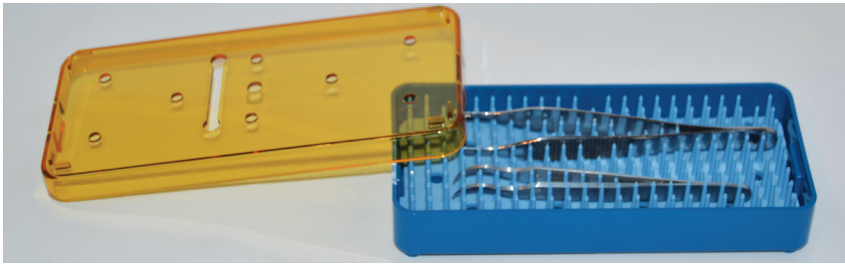
• STERILIZATION VALIDATION STUDY*

Independent testing showed 100% kill both above and below the mats at 2 minutes, giving you confidence that your instrumentation will be sterile.

*Based on standards used in the studies. Refer to our website for full studies: Steribest.com



INSTRUMENT TRAYS



TRAY WITH BASE, LID & MAT 6" Length

CP614
6.0 in. x 2.5 in. x .75 in.
152mm x 64mm x 19mm



TRAY WITH BASE, LID & BARS

2 Bars with
1-Slot Knife Holder

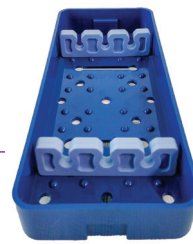
CP614-DK-1
6.0 in. x 2.5 in. x .75 in.
5.5mm bar slot



TRAY WITH BASE, LID & BARS

2 Bars with
2-Slot Knife Holder

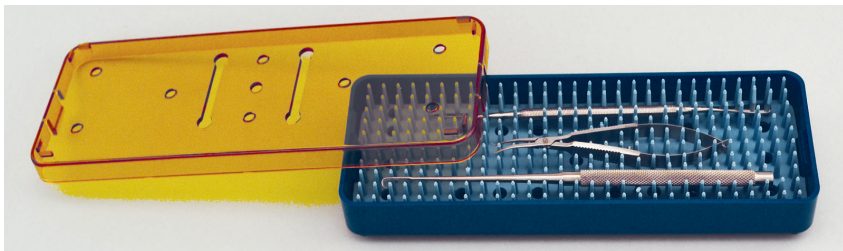
CP614-DK-2
6.0 in. x 2.5 in. x .75 in.
5.5mm bar slots



TRAY WITH BASE, LID & BARS

2 Bars with
3-Slot Knife Holder

CP614-DK-3
6.0 in. x 2.5 in. x .75 in.
5.5mm bar slots



TRAY WITH BASE, LID & MAT 7.5" Length

CP778
7.5 in. x 2.5 in. x .75 in.
190.5mm x 63.5mm x 19mm



TRAY WITH BASE, LID & BARS

2 Bars with
1-Slot Knife Holder

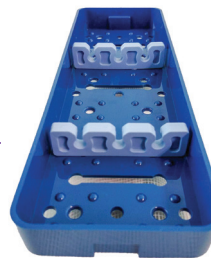
CP778-DK-1
7.5 in. x 2.5 in. x .75 in.
5.5mm bar slot



TRAY WITH BASE, LID & BARS

2 Bars with
2-Slot Knife Holder

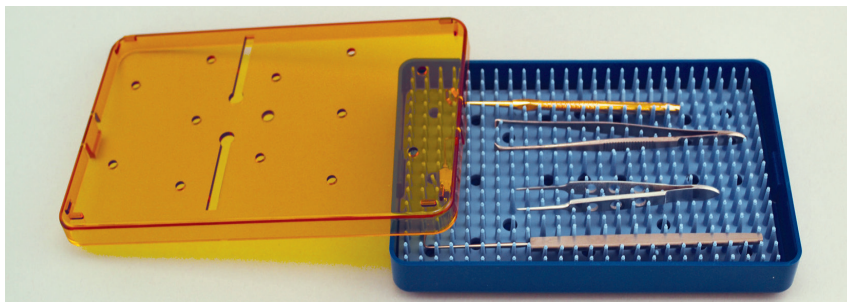
CP778-DK-2
7.5 in. x 2.5 in. x .75 in.
5.5mm bar slots



TRAY WITH BASE, LID & BARS

2 Bars with
3-Slot Knife Holder

CP778-DK-3
7.5 in. x 2.5 in. x .75 in.
5.5mm bar slots



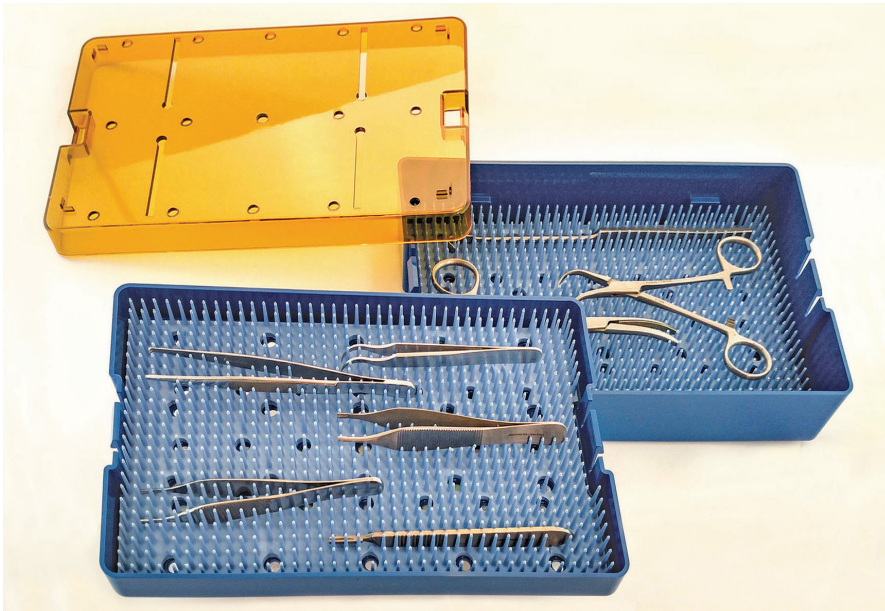
TRAY WITH BASE, LID & MAT 6.5" Length

CP634
6.5 in. x 4.0 in. x .75 in.
165mm x 102mm x 19mm



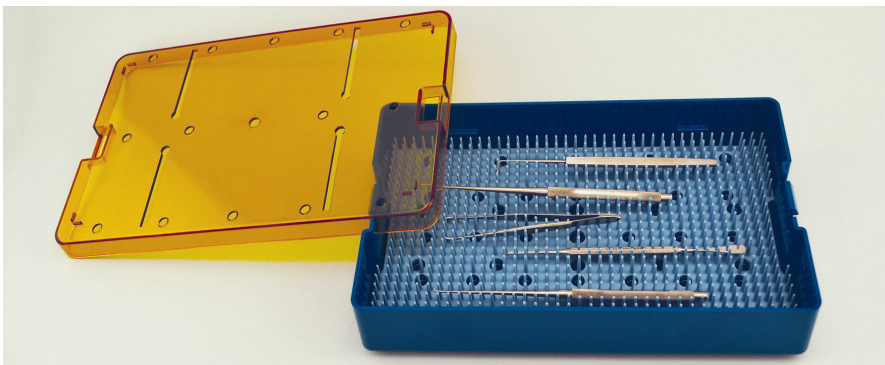
TRAY WITH BASE, LID & BARS 2 Bars with 5-Slot Knife Holder

CP634-DK-5
6.5 in. x 4.0 in. x .75 in.
2 Bars with 5-Slot Knife Holder
5.5mm bar slots



TRAY WITH BASE, LID, MAT, INSERT TRAY & INSERT MAT
10" Length

CP1038D2
10.0 in. x 6.0 in. x 1.5 in.
254mm x 152mm x 38mm



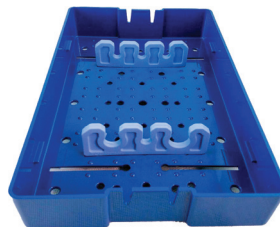
TRAY WITH BASE, LID & MAT
10" Length

CP1038D1
10.0 in. x 6.0 in. x 1.5 in.
254mm x 152mm x 38mm



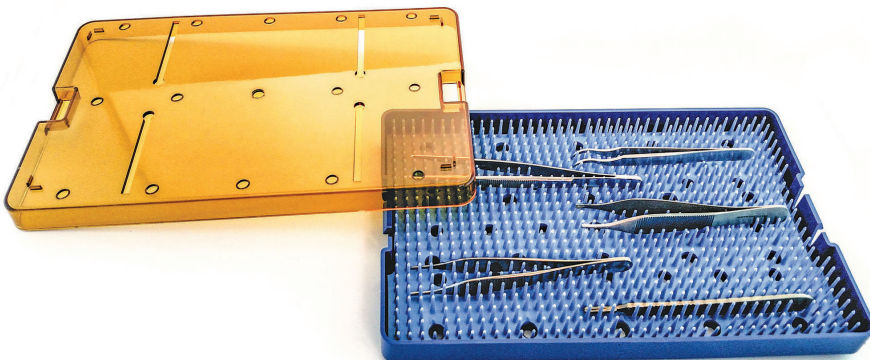
TRAY WITH BASE, LID & BARS
2 Bars with
1-Slot Phaco Holder

CP1038D1-P-1S/L
10.0 in. x 6.0 in. x 1.5 in.
One bar has 16mm slot;
Other bar has 8mm slot



TRAY WITH BASE, LID & BARS
2 Bars with
3-Slot Phaco Holder

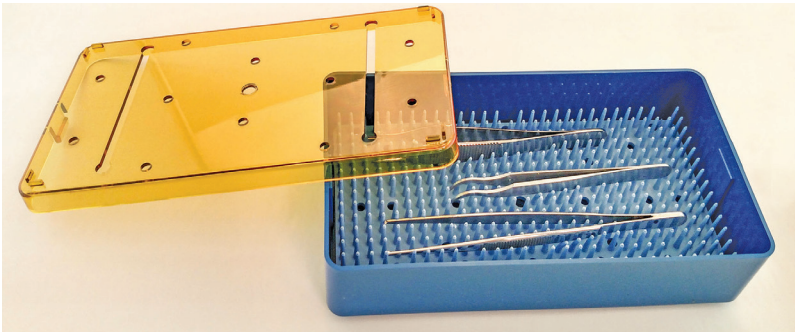
CP1038D1-P-3S/L
10.0 in. x 6.0 in. x 1.5 in.
One bar has three 7.5mm slots;
Other bar has three slots:
15.5mm, 7.5mm and 12.5mm



TRAY WITH BASE, LID & MAT
10" Length

CP1038S
10.0 in. x 6.0 in. x .75 in.
254mm x 152mm x 19mm

INSTRUMENT TRAYS



TRAY WITH BASE, LID & MAT 7.5" Length

CP471D1
7.5 in. x 4.0 in. x 1.5 in.
190.5mm x 102mm x 38mm



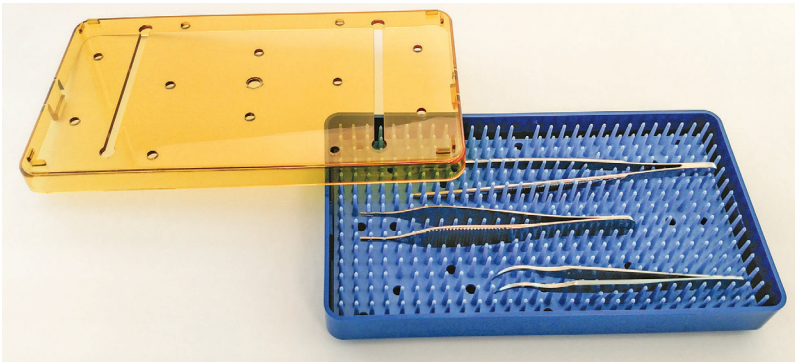
TRAY WITH BASE, LID & BARS 2 Bars with 1-Slot Phaco Holder

CP471D1-P-1S/L
7.5 in. x 4.0 in. x 1.5 in.
One bar has 16mm slot;
Other bar has 8mm slot



TRAY WITH BASE, LID & BARS 2 Bars with 3-Slot Phaco Holder

CP471D1-P-3S/L
7.5 in. x 4.0 in. x 1.5 in.
One bar has three 7.5mm slots;
Other bar has three slots:
15.5mm, 7.5mm and 12.5mm



TRAY WITH BASE, LID & MAT 7.5" Length

CP471S
7.5 in. x 4.0 in. x .75 in.
190.5mm x 102mm x 19mm



TRAY WITH BASE, LID & BARS 2 Bars with 2-Slot Knife Holder

CP471S-DK-2
7.5 in. x 4.0 in. x .75 in.
5.5mm bar slots



TRAY WITH BASE, LID & BARS 2 Bars with 3-Slot Knife Holder

CP471S-DK-3
7.5 in. x 4.0 in. x .75 in.
5.5mm bar slots



TRAY WITH BASE, LID & BARS 2 Bars with 4-Slot Knife Holder

CP471S-DK-4
7.5 in. x 4.0 in. x .75 in.
5.5mm bar slots



TRAY WITH BASE, LID & BARS 2 Bars with 5-Slot Knife Holder

CP471S-DK-5
7.5 in. x 4.0 in. x .75 in.
5.5mm bar slots

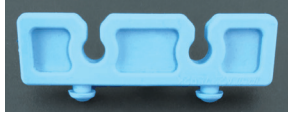
SILICONE BAR HOLDERS / PIN MATS

SteriBest® Silicone Bar Holders are available to hold a variety of surgical knives and instruments in our trays during sterilization and transport. The bars are inserted into the holes of the Steribest® Instrument Trays for ease of use and protection of delicate surgical tools.



BAR WITH 1-SLOT KNIFE HOLDER

CP2511P
2.32 in. width, 1 slot open end, 5.5mm



BAR WITH 2-SLOT KNIFE HOLDER

CP2512P
2.32 in. width, 2 slot open end, 5.5mm



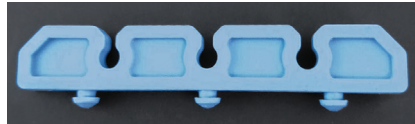
BAR WITH 3-SLOT KNIFE HOLDER

CP2513P
2.32 in. width, 3 slot open end, 5.5mm



BAR WITH 2-SLOT KNIFE HOLDER

CP4612P
3.74 in. width, 2 slot open end, 5.5mm



BAR WITH 3-SLOT KNIFE HOLDER

CP4613P
3.74 in. width, 3 slot open end, 5.5mm



BAR WITH 4-SLOT KNIFE HOLDER

CP4614P
3.74 in. width, 4 slot open end, 5.5mm



BAR WITH 5-SLOT KNIFE HOLDER

CP4615P
3.74 in. width, 5 slot open end, 5.5mm



BAR WITH 1-SLOT PHACO HOLDER

CP2311P
3.19 in. width, 1 slot open end, 16mm



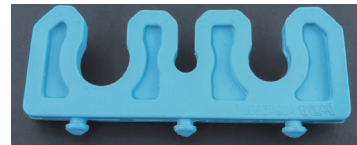
BAR WITH 1-SLOT PHACO HOLDER

CP2312P
3.19 in. width, 1 slot open end, 8mm



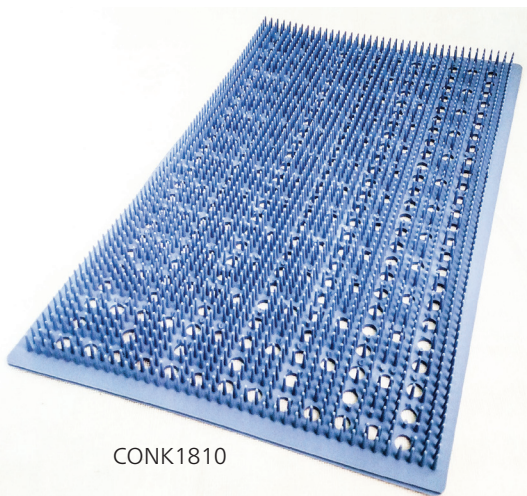
BAR WITH 3-SLOT PHACO HOLDER

CP2313P
3.19 in. width, 3 slot open end, 7.5mm



BAR WITH 3-SLOT PHACO HOLDER

CP2314P
3.19 in. width, 3 slot open end, 15.5mm, 7.5mm, 12.5mm



CONK1810

SteriBest® Silicone Pin Mats are available in assorted sizes to hold a variety of surgical knives and instruments in instrument trays during sterilization and transport.

**SILICONE PIN MAT
FLAT BOTTOM**

CONK1810
18.2 in. x 10.2 in.

**SILICONE PIN MAT
FLAT BOTTOM**

CUST_PM14
17 cm x 33 cm

**SILICONE PIN MAT
FLAT BOTTOM**

CUST_PM10
16 cm x 24 cm

**SILICONE PIN MAT
FOR CP1038D2
STERIBEST INSERT TRAY**

CP1038-3

**SILICONE PIN MAT
FOR CP1038
STERIBEST TRAY**

CP1038-7

**SILICONE PIN MAT
FOR CP471
STERIBEST TRAY**

CP471-7

**SILICONE PIN MAT
FOR CP614
STERIBEST TRAY**

CP614-7

**SILICONE PIN MAT
FOR CP634
STERIBEST TRAY**

CP634-7

**SILICONE PIN MAT
FOR CP778
STERIBEST TRAY**

CP778-7



INSTRUMENT STRINGERS

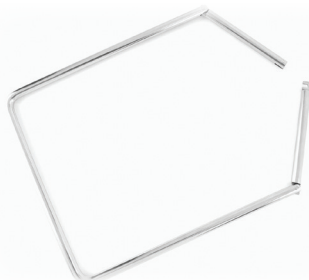
SteriBest® Instrument Stringers are manufactured from medical grade, high quality 300 series stainless steel in a wide variety of beneficial lengths, widths, and styles to meet the needs of virtually every medical facility.

- Manufactured with high quality 300 series stainless steel
- Many stringer styles available
- Most styles are available in two widths.
- Private label programs and custom products available.



CENTER LATCH STRINGER
3.0 in. width

| | | | |
|---------|-----|---------|-----|
| STCL-6 | 6" | STCL-14 | 14" |
| STCL-8 | 8" | STCL-16 | 16" |
| STCL-10 | 10" | STCL-18 | 18" |
| STCL-12 | 12" | | |



CENTER LATCH STRINGER
5.75 in. width

| | | | |
|-----------|-----|-----------|-----|
| STCL55-6 | 6" | STCL55-12 | 12" |
| STCL55-8 | 8" | STCL55-14 | 14" |
| STCL55-10 | 10" | STCL55-16 | 16" |



PIN LOCK STRINGER
2.75 in. width

| | | | |
|-------|-----|-------|-----|
| ST-4 | 4" | ST-12 | 12" |
| ST-6 | 6" | ST-14 | 14" |
| ST-8 | 8" | ST-16 | 16" |
| ST-10 | 10" | | |



PIN LOCK STRINGER
3.0 in. width

| | |
|-------|-----|
| ST-18 | 18" |
| ST-20 | 20" |



PIN LOCK STRINGER
5.5 in. width

| | | | |
|---------|-----|---------|-----|
| ST55-6 | 6" | ST55-12 | 12" |
| ST55-8 | 8" | ST55-14 | 14" |
| ST55-10 | 10" | ST55-16 | 16" |



The use of instrument stringers is integral to the preparation of instruments for sterilization. Stringers hold ring-handled instruments open during the cleaning process, to ensure the maximum surface area of the instruments are exposed to the cleaning solution. A closed instrument may conceal bioburden which, if left intact, would require additional cleaning methods. The open position of the instruments on the stringers also ensures better exposure to heated air drying, for quicker dry times.



OPEN END STRINGER
2.75 in. width

| | | | |
|-----------|-----|-----------|-----|
| U-OE-ST4 | 4" | U-OE-ST12 | 12" |
| U-OE-ST6 | 6" | U-OE-ST14 | 14" |
| U-OE-ST8 | 8" | U-OE-ST16 | 16" |
| U-OE-ST10 | 10" | U-OE-ST18 | 18" |



OPEN END STRINGER
5.5 in. width

| | | | |
|-------------|-----|-------------|-----|
| U-OE-ST5-6 | 6" | U-OE-ST5-12 | 12" |
| U-OE-ST5-8 | 8" | U-OE-ST5-14 | 14" |
| U-OE-ST5-10 | 10" | U-OE-ST5-16 | 16" |



SPRING STRINGER
2.75 in. width

| | | | |
|--------|-----|--------|-----|
| SPS-6 | 6" | SPS-12 | 12" |
| SPS-8 | 8" | SPS-14 | 14" |
| SPS-10 | 10" | SPS-16 | 16" |



T-BAR STRINGER

| | |
|--------|------------|
| STB-6 | 6" length |
| STB-8 | 8" length |
| STB-12 | 12" length |



WEINSTEIN STRINGER
3.0 in. width

| | | | |
|--------|-----|--------|-----|
| WSR-6 | 6" | WSR-12 | 12" |
| WSR-8 | 8" | WSR-14 | 14" |
| WSR-10 | 10" | WSR-16 | 16" |



INSTRUMENT STAND

STR-STAND3.5

The instrument stand holds the instruments upright and open. The stand can be secured to a basket or remain free. Comes with four 3.5mm screws for securing to a basket.

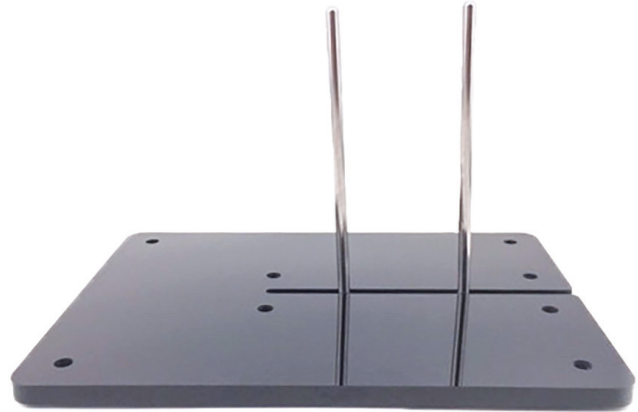
Instrument stringer width measured outer edge to outer edge.

INSTRUMENT STRINGERS



PIN AND SOCKET STRINGER
3.0 in. width

| | |
|---------|------------|
| STPS-6 | 6" length |
| STPS-8 | 8" length |
| STPS-10 | 10" length |
| STPS-12 | 12" length |



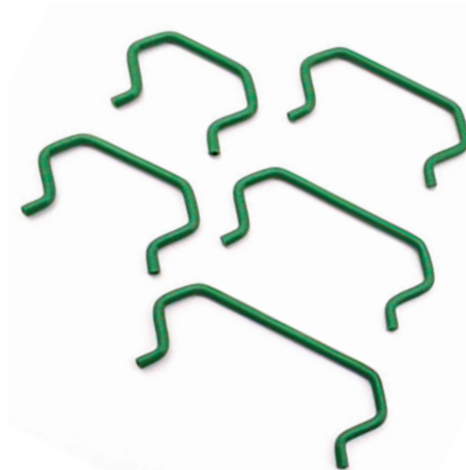
INSTRUMENT STRINGER HOLDING BOARD
7.75" X 10.5"

SHB-B1
Holds stringers while instruments are being placed on them. (*Stringer not included.*)



BUNT FORCEPS HOLDER

BUNT-FH



BAND CLAMPS

| | |
|-------|-------|
| H-40G | 40 mm |
| H-50G | 50 mm |
| H-60G | 60 mm |
| H-70G | 70 mm |
| H-80G | 80 mm |

Made of stainless steel and coated with green silicone.
Allows instrument jaws and joints to remain open during cleaning.



INSTRUMENT SPREADER

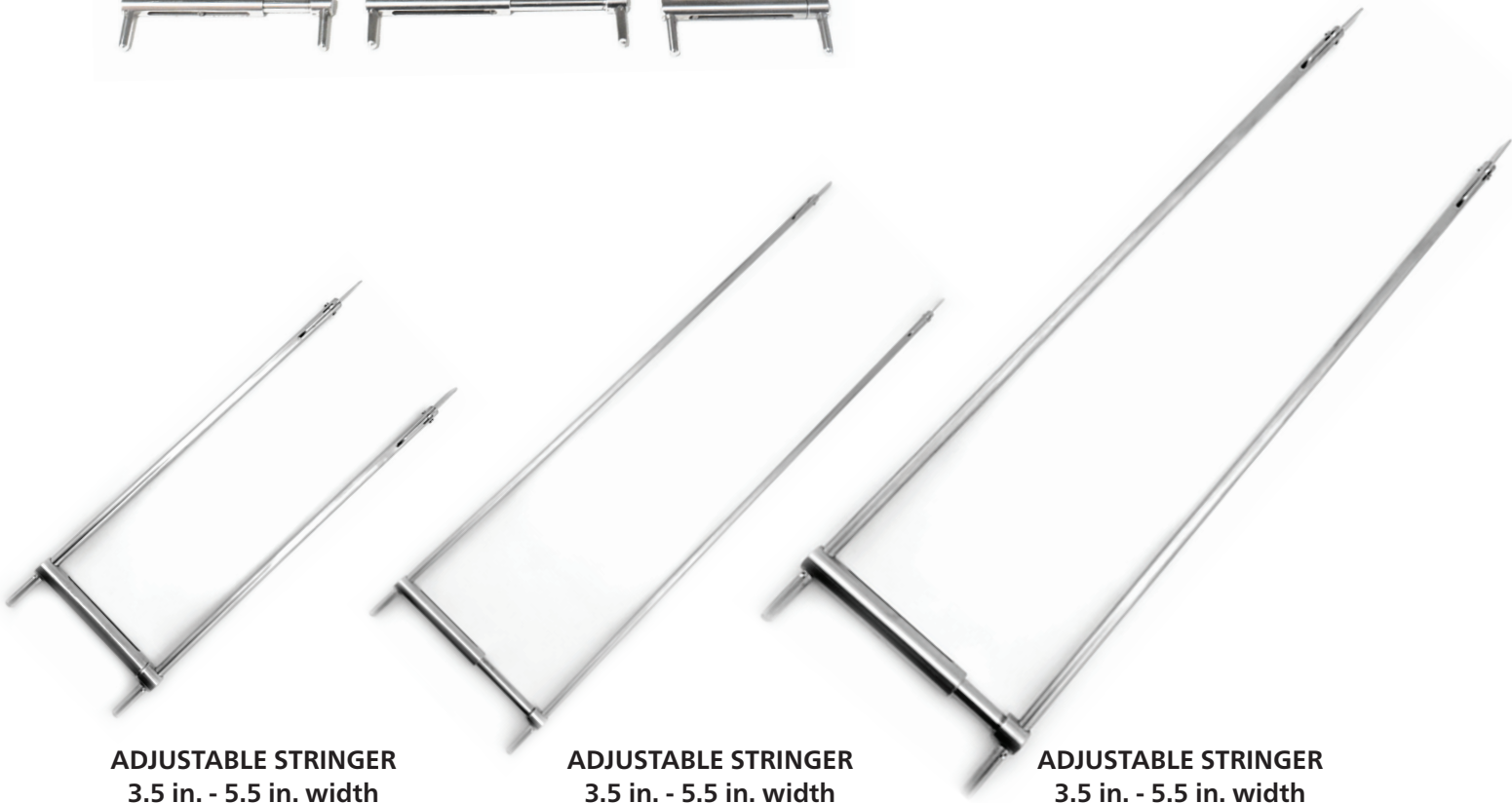
H-00

Made of stainless steel.
Keeps ring-handled instrument jaws open during cleaning.

ADJUSTABLE INSTRUMENT STRINGERS



Adjustable Stringers are designed for use in any width or length basket or tray allowing for stringing a variety of open instrument sizes. Stringers adjust in width and are available in three lengths.



ADJUSTABLE STRINGER
3.5 in. - 5.5 in. width

ADJUSTABLE STRINGER
3.5 in. - 5.5 in. width

ADJUSTABLE STRINGER
3.5 in. - 5.5 in. width

AJS8 8" length

AJS13 13" length

AJS17 17" length

POUCH STERILIZATION RACKS

Pouch Sterilization Racks hold instrument sterilization pouches on their edges. This position prevents over stacking, facilitates sterilant contact and reduces drying time. Available in loop and peg style in a variety of heights and widths. All models are manufactured from medical grade 300 series stainless steel for superior strength. Compatible with steam, EtO and gas plasma sterilization.

- Available in two styles: **Loop Style** and **Peg Style**.
- Available in multiple heights and widths.
- Reduces pouch drying time.
- Stainless steel construction.
- Prevents over-stacking.
- Compatible with all sterilization methods.

LOOP STYLE POUCH STERILIZATION RACKS



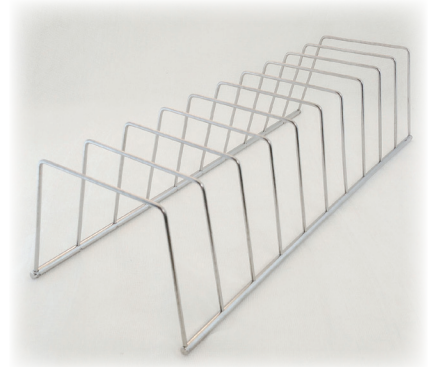
LOOP STYLE RACK
5 Slots, 1.625" Spacing

PR-L0944-5
8.7" x 4.0" x 4.0"



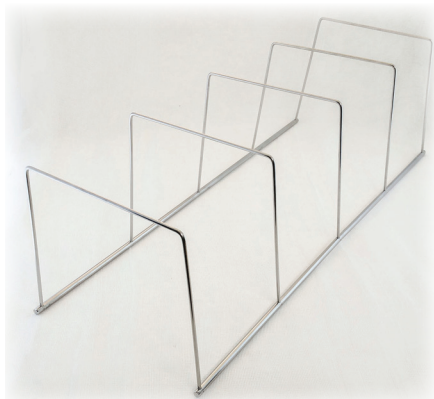
LOOP STYLE RACK
21 Slots, 0.75" Spacing

PR-L1744-21
16.3" x 4.0" x 4.0"



LOOP STYLE RACK
10 Slots, 1.625" Spacing

PR-L1844-10
16.8" x 4.0" x 4.0"



LOOP STYLE RACK
4 Slots, 5" Spacing

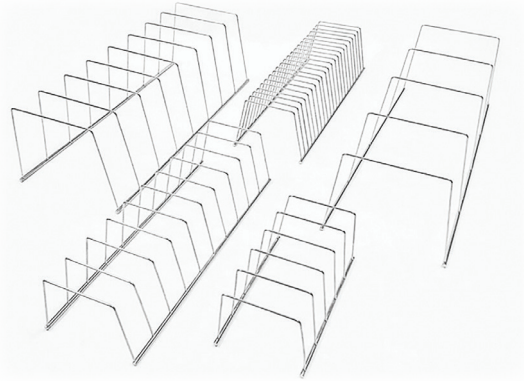
PR-L2066-4
20.5" x 6.0" x 6.0"



LOOP STYLE RACK
8 Slots, 2.5" Spacing

PR-L2066-8
20.5" x 6.0" x 6.0"





PEG STYLE POUCH STERILIZATION RACKS



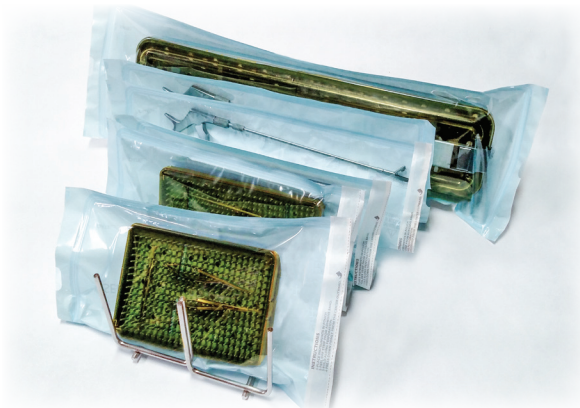
PEG STYLE RACK
4 Slots, 4" Spacing

PR-P1674-4
16.5" x 7.25" x 4.0"

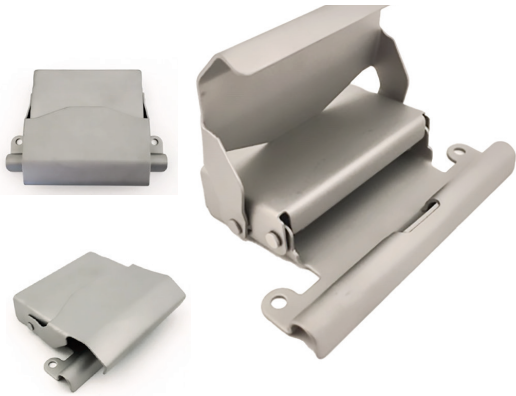


PEG STYLE RACK
5 Slots, 4" Spacing

PR-P2074-5
20.5" x 7.25" x 4.0"

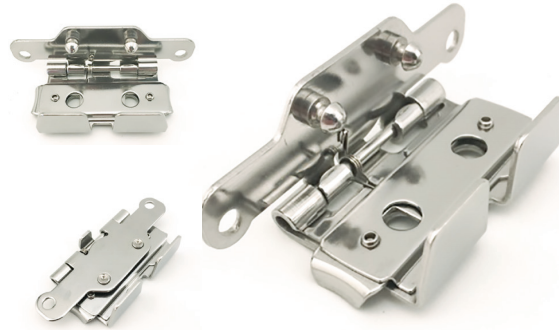


LATCHES FOR OEM STERILIZATION & SURGICAL TRAYS



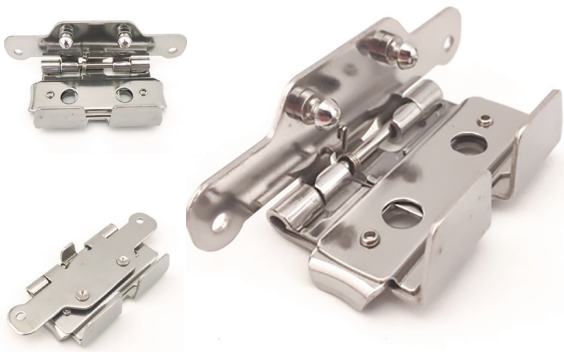
STERILIZATION TRAY LATCH

23-1939
Stainless Steel - Passivated



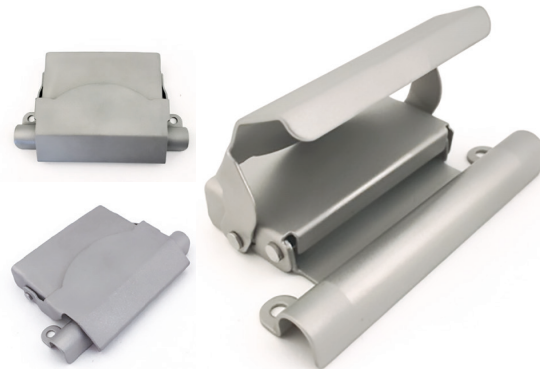
STERILIZATION TRAY LATCH

23-1940
Stainless Steel - Passivated



STERILIZATION TRAY LATCH

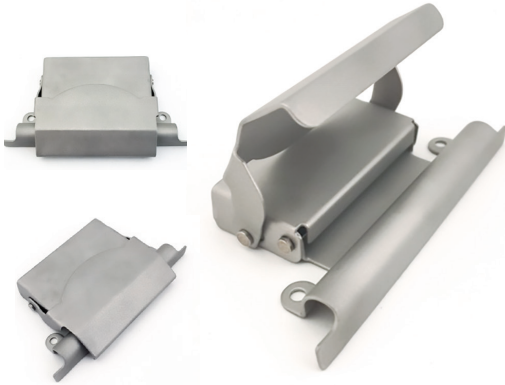
23-1950
Stainless Steel - Passivated
Larger Mounting Holes Than 23-1940



STERILIZATION TRAY LATCH

Latch Model No. 1
Stainless Steel - Passivated

LATCHES FOR OEM STERILIZATION & SURGICAL TRAYS



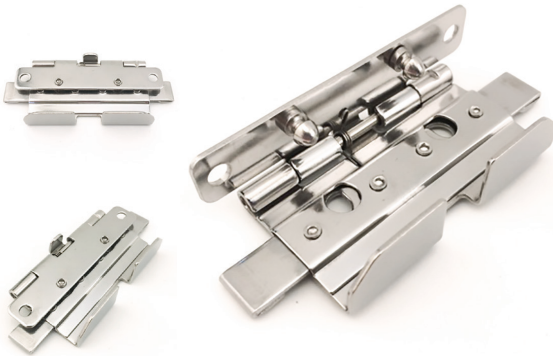
STERILIZATION TRAY LATCH

Latch Model No. 2
Stainless Steel - Passivated



STERILIZATION TRAY LATCH

Latch Model No. 3
Stainless Steel - Electropolished



STERILIZATION TRAY LATCH

Latch Model No. 4
Stainless Steel - Passivated



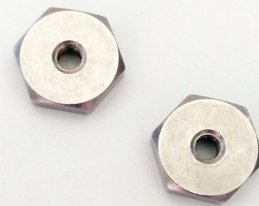
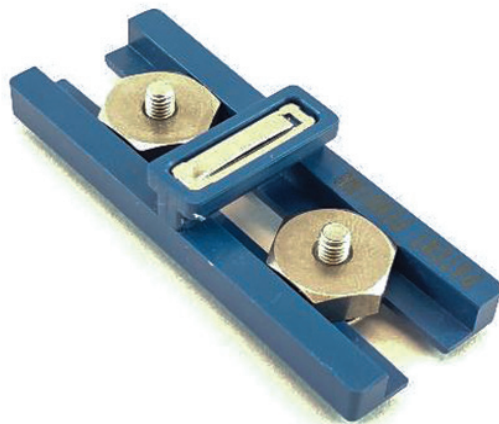
STERILIZATION TRAY LATCH

Latch Model No. 5
Stainless Steel - Passivated



UNIVERSAL SCOPE & INSTRUMENT PROTECTION SYSTEM

SteriBest® Universal Scope & Instrument Protection System has been designed to hold a wide variety of scopes and surgical instruments in virtually all trays and baskets used for sterilization and transport utilizing the Universal Wing Adapter Assembly.*



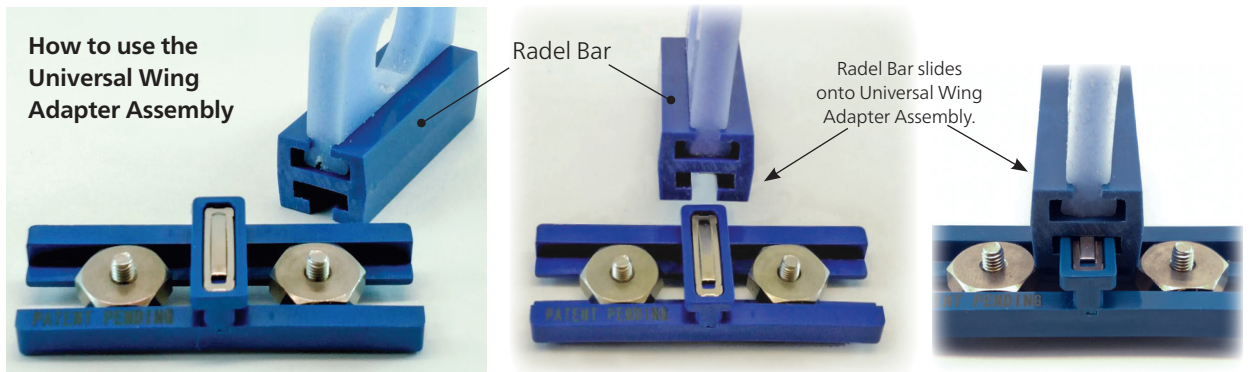
UNIVERSAL WING ADAPTER ASSEMBLY

CP539060

Includes one Universal Wing Adapter, one spring, two nuts, two 5.9 mm screws, and two 7.8 mm screws (for use in thicker aluminum and plastic sterilization trays). This item has a limited lifetime and will need to be replaced occasionally due to wear and tear.

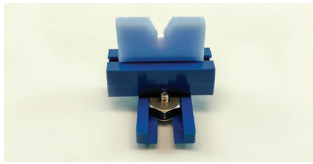
*Universal Wing Adapter Assembly is Patent Pending.

How to use the Universal Wing Adapter Assembly



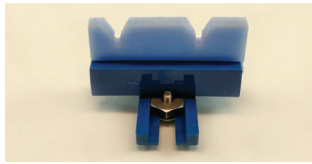
Screws attach below the basket upward through the Universal Wing Adapter and secures with two nuts.

UNIVERSAL SCOPE & INSTRUMENT PROTECTION SYSTEM



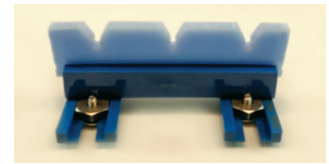
SILICONE BAR WITH RADEL BAR & UNIVERSAL WING ADAPTER ASSEMBLY

CP530001
1.5", One 3mm Opening and
1 Universal Wing Adapter Assembly



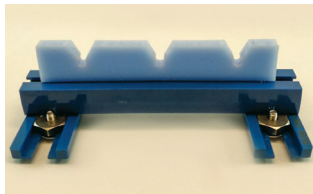
SILICONE BAR WITH RADEL BAR & UNIVERSAL WING ADAPTER ASSEMBLY

CP530002
2", Two 3mm Openings and
1 Universal Wing Adapter Assembly



SILICONE BAR WITH RADEL BAR & UNIVERSAL WING ADAPTER ASSEMBLIES

CP530003
3", Three 3mm Openings and
2 Universal Wing Adapter Assemblies



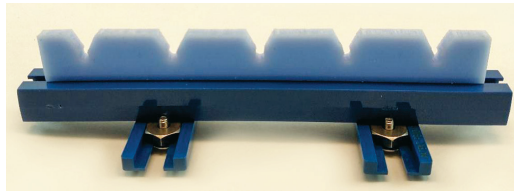
SILICONE BAR WITH RADEL BAR & UNIVERSAL WING ADAPTER ASSEMBLIES

CP530004
4", Three 3mm Openings and
2 Universal Wing Adapter Assemblies



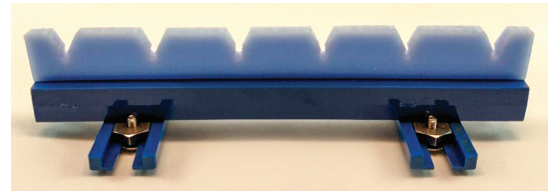
SILICONE BAR WITH RADEL BAR & UNIVERSAL WING ADAPTER ASSEMBLIES

CP530005
5", Four 3mm Openings and
2 Universal Wing Adapter Assemblies



SILICONE BAR WITH RADEL BAR & UNIVERSAL WING ADAPTER ASSEMBLIES

CP530006
6", Five 3mm Openings and
2 Universal Wing Adapter Assemblies



SILICONE BAR WITH RADEL BAR & UNIVERSAL WING ADAPTER ASSEMBLIES

CP530007
6", Six 3mm Openings and
2 Universal Wing Adapter Assemblies



SILICONE BAR WITH RADEL BAR & UNIVERSAL WING ADAPTER ASSEMBLIES

CP530008
7", Six 3mm Openings and
2 Universal Wing Adapter Assemblies



THE CP530000 FAMILY OF SILICONE HOLDERS

UNIVERSAL SCOPE & INSTRUMENT PROTECTION SYSTEM



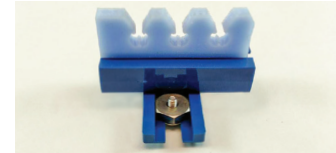
SILICONE BAR WITH RADEL BAR & UNIVERSAL WING ADAPTER ASSEMBLY

CP530201
1.5", One 5mm Opening and
1 Universal Wing Adapter Assembly



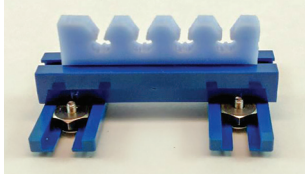
SILICONE BAR WITH RADEL BAR & UNIVERSAL WING ADAPTER ASSEMBLY

CP530202
1.5", Two 5mm Openings and
1 Universal Wing Adapter Assembly



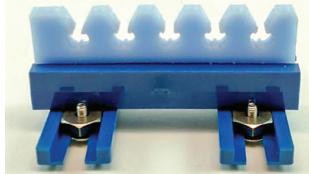
SILICONE BAR WITH RADEL BAR & UNIVERSAL WING ADAPTER ASSEMBLY

CP530203
2", Three 5mm Openings and
1 Universal Wing Adapter Assembly



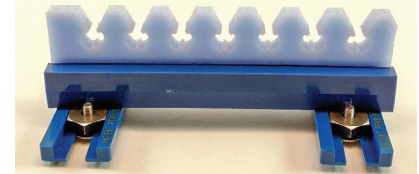
SILICONE BAR WITH RADEL BAR & UNIVERSAL WING ADAPTER ASSEMBLIES

CP530204
3", Four 5mm Openings and
2 Universal Wing Adapter Assemblies



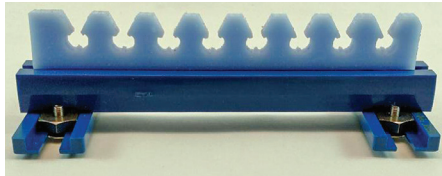
SILICONE BAR WITH RADEL BAR & UNIVERSAL WING ADAPTER ASSEMBLIES

CP530205
3", Five 5mm Openings and
2 Universal Wing Adapter Assemblies



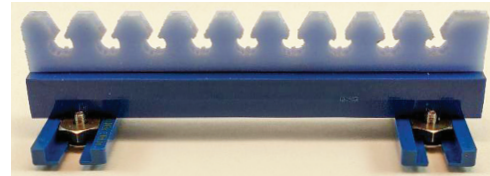
SILICONE BAR WITH RADEL BAR & UNIVERSAL WING ADAPTER ASSEMBLIES

CP530206
4", Seven 5mm Openings and
2 Universal Wing Adapter Assemblies



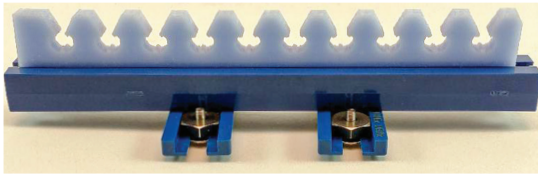
SILICONE BAR WITH RADEL BAR & UNIVERSAL WING ADAPTER ASSEMBLIES

CP530207
5", Eight 5mm Openings and
2 Universal Wing Adapter Assemblies



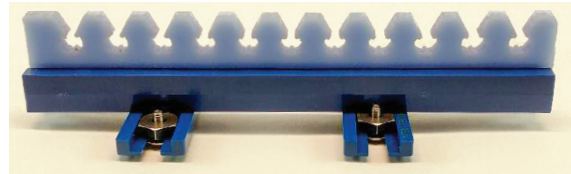
SILICONE BAR WITH RADEL BAR & UNIVERSAL WING ADAPTER ASSEMBLIES

CP530208
5", Nine 5mm Openings and
2 Universal Wing Adapter Assemblies



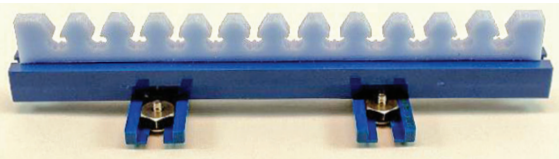
SILICONE BAR WITH RADEL BAR & UNIVERSAL WING ADAPTER ASSEMBLIES

CP530209
6", Ten 5mm Openings and
2 Universal Wing Adapter Assemblies



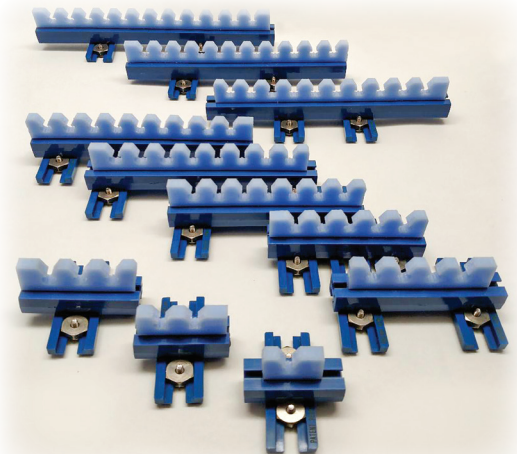
SILICONE BAR WITH RADEL BAR & UNIVERSAL WING ADAPTER ASSEMBLIES

CP530210
6", Eleven 5mm Openings and
2 Universal Wing Adapter Assemblies



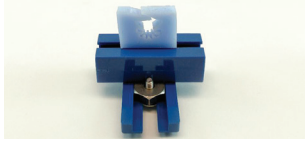
SILICONE BAR WITH RADEL BAR & UNIVERSAL WING ADAPTER ASSEMBLIES

CP530211
7", Twelve 5mm Openings and
2 Universal Wing Adapter Assemblies



**THE
CP530200
FAMILY OF
SILICONE
HOLDERS**

UNIVERSAL SCOPE & INSTRUMENT PROTECTION SYSTEM



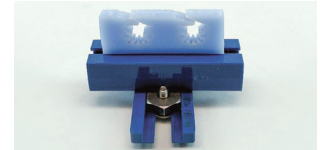
SILICONE BAR WITH RADEL BAR & UNIVERSAL WING ADAPTER ASSEMBLY

CP537001
1.5", One 3mm-8mm Opening and 1 Universal Wing Adapter Assembly



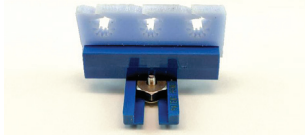
SILICONE BAR WITH RADEL BAR & UNIVERSAL WING ADAPTER ASSEMBLY

CP537002
1.5", Two 3mm-8mm Openings and 1 Universal Wing Adapter Assembly



SILICONE BAR WITH RADEL BAR & UNIVERSAL WING ADAPTER ASSEMBLY

CP537003
2", Two 3mm-8mm Openings and 1 Universal Wing Adapter Assembly



SILICONE BAR WITH RADEL BAR & UNIVERSAL WING ADAPTER ASSEMBLY

CP537004
2", Three 3mm-8mm Openings and 1 Universal Wing Adapter Assembly



SILICONE BAR WITH RADEL BAR & UNIVERSAL WING ADAPTER ASSEMBLIES

CP537005
3", Three 3mm-8mm Openings and 2 Universal Wing Adapter Assemblies



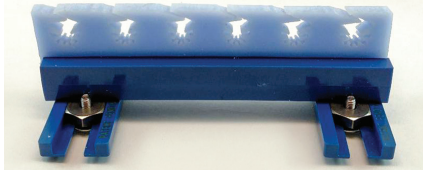
SILICONE BAR WITH RADEL BAR & UNIVERSAL WING ADAPTER ASSEMBLIES

CP537006
3", Four 3mm-8mm Openings and 2 Universal Wing Adapter Assemblies



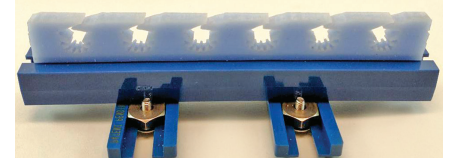
SILICONE BAR WITH RADEL BAR & UNIVERSAL WING ADAPTER ASSEMBLY

CP537007
4", Five 3mm-8mm Openings and 2 Universal Wing Adapter Assemblies



SILICONE BAR WITH RADEL BAR & UNIVERSAL WING ADAPTER ASSEMBLIES

CP537008
4", Six 3mm-8mm Openings and 2 Universal Wing Adapter Assemblies



SILICONE BAR WITH RADEL BAR & UNIVERSAL WING ADAPTER ASSEMBLIES

CP537009
5", Six 3mm-8mm Openings and 2 Universal Wing Adapter Assemblies



SILICONE BAR WITH RADEL BAR & UNIVERSAL WING ADAPTER ASSEMBLY

CP537010
5", Seven 3mm-8mm Openings and 2 Universal Wing Adapter Assemblies



SILICONE BAR WITH RADEL BAR & UNIVERSAL WING ADAPTER ASSEMBLIES

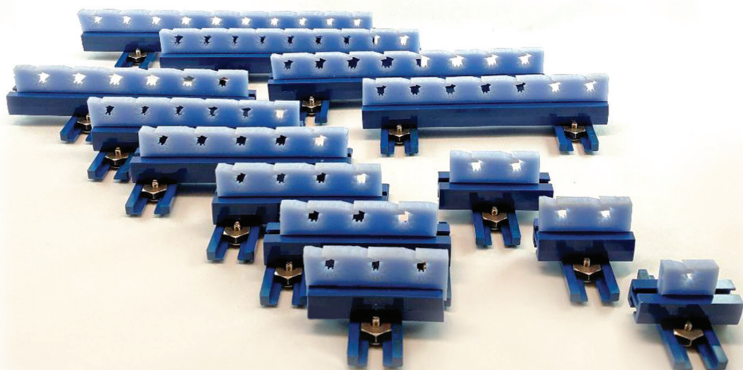
CP537011
6", Eight 3mm-8mm Openings and 2 Universal Wing Adapter Assemblies



SILICONE BAR WITH RADEL BAR & UNIVERSAL WING ADAPTER ASSEMBLIES

CP537012
6", Nine 3mm-8mm Openings and 2 Universal Wing Adapter Assemblies

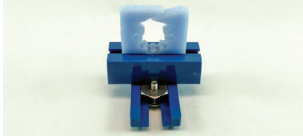
THE CP537000 FAMILY OF SILICONE HOLDERS



SILICONE BAR WITH RADEL BAR & UNIVERSAL WING ADAPTER ASSEMBLIES

CP537013
7", Ten 3mm-8mm Openings and 2 Universal Wing Adapter Assemblies

UNIVERSAL SCOPE & INSTRUMENT PROTECTION SYSTEM



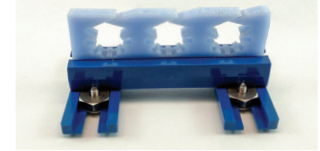
SILICONE BAR WITH RADEL BAR & UNIVERSAL WING ADAPTER ASSEMBLY

CP537101
1.5", One 8mm-15mm Opening and 1 Universal Wing Adapter Assembly



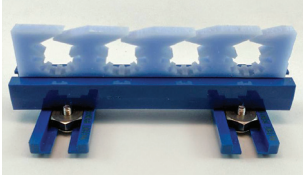
SILICONE BAR WITH RADEL BAR & UNIVERSAL WING ADAPTER ASSEMBLY

CP537102
2", Two 8mm-15mm Openings and 1 Universal Wing Adapter Assembly



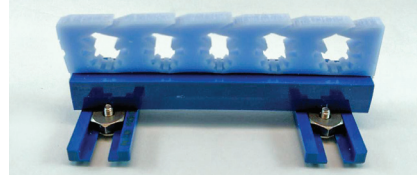
SILICONE BAR WITH RADEL BAR & UNIVERSAL WING ADAPTER ASSEMBLY

CP537103
3", Three 8mm-15mm Openings and 2 Universal Wing Adapter Assemblies



SILICONE BAR WITH RADEL BAR & UNIVERSAL WING ADAPTER ASSEMBLIES

CP537104
4", Four 8mm-15mm Openings and 2 Universal Wing Adapter Assemblies



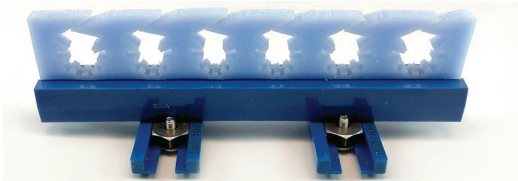
SILICONE BAR WITH RADEL BAR & UNIVERSAL WING ADAPTER ASSEMBLIES

CP537105
4", Five 8mm-15mm Openings and 2 Universal Wing Adapter Assemblies



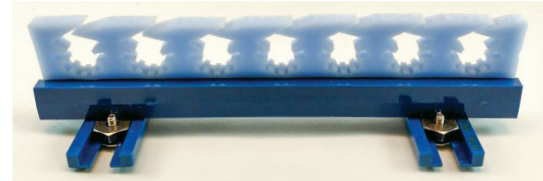
SILICONE BAR WITH RADEL BAR & UNIVERSAL WING ADAPTER ASSEMBLIES

CP537106
5", Five 8mm-15mm Openings and 2 Universal Wing Adapter Assemblies



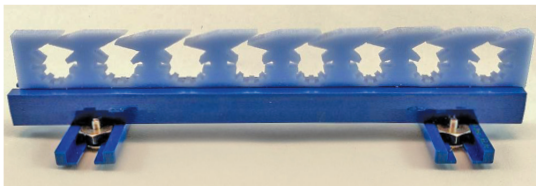
SILICONE BAR WITH RADEL BAR & UNIVERSAL WING ADAPTER ASSEMBLIES

CP537107
5", Six 8mm-15mm Openings and 2 Universal Wing Adapter Assemblies



SILICONE BAR WITH RADEL BAR & UNIVERSAL WING ADAPTER ASSEMBLIES

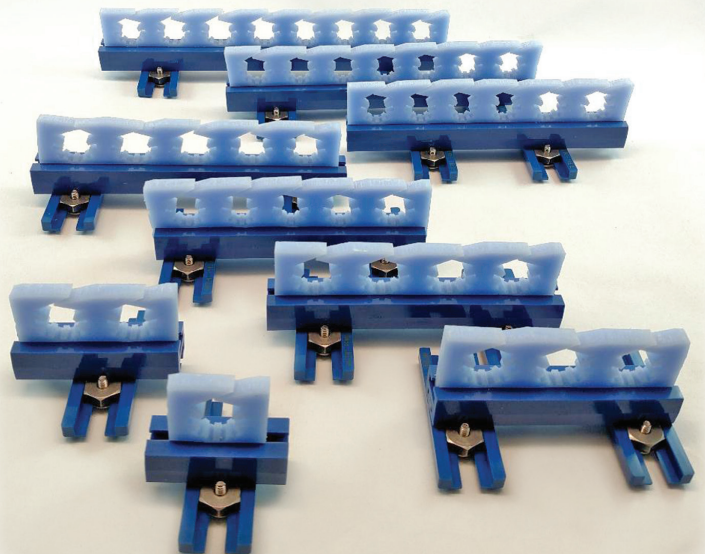
CP537108
6", Seven 8mm-15mm Openings and 2 Universal Wing Adapter Assemblies



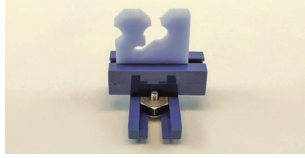
SILICONE BAR WITH RADEL BAR & UNIVERSAL WING ADAPTER ASSEMBLIES

CP537109
7", Eight 8mm-15mm Openings and 2 Universal Wing Adapter Assemblies

THE CP537100 FAMILY OF SILICONE HOLDERS



UNIVERSAL SCOPE & INSTRUMENT PROTECTION SYSTEM



SILICONE BAR WITH RADEL BAR & UNIVERSAL WING ADAPTER ASSEMBLY

CP537201

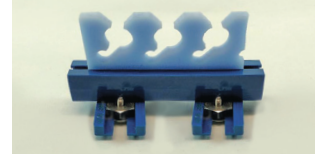
1.5", One 5mm & 10mm Double Opening and 1 Universal Wing Adapter Assembly



SILICONE BAR WITH RADEL BAR & UNIVERSAL WING ADAPTER ASSEMBLY

CP537202

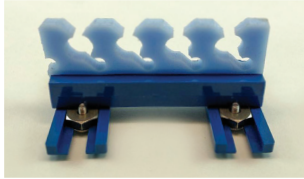
2", Two 5mm & 10mm Double Openings and 1 Universal Wing Adapter Assembly



SILICONE BAR WITH RADEL BAR & UNIVERSAL WING ADAPTER ASSEMBLIES

CP537203

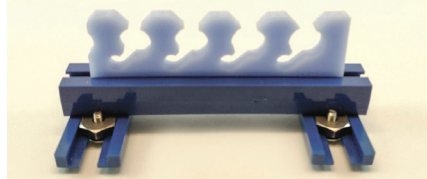
3", Three 5mm & 10mm Double Openings and 2 Universal Wing Adapter Assemblies



SILICONE BAR WITH RADEL BAR & UNIVERSAL WING ADAPTER ASSEMBLIES

CP537204

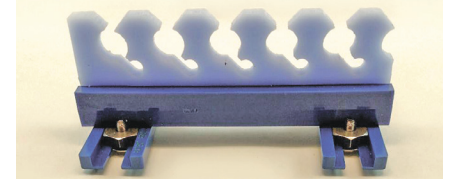
3", Four 5mm & 10mm Double Openings and 2 Universal Wing Adapter Assemblies



SILICONE BAR WITH RADEL BAR & UNIVERSAL WING ADAPTER ASSEMBLIES

CP537205

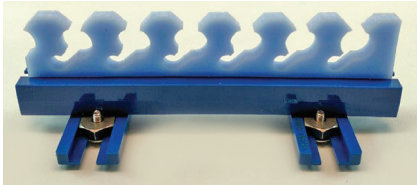
4", Four 5mm & 10mm Double Openings and 2 Universal Wing Adapter Assemblies



SILICONE BAR WITH RADEL BAR & UNIVERSAL WING ADAPTER ASSEMBLIES

CP537206

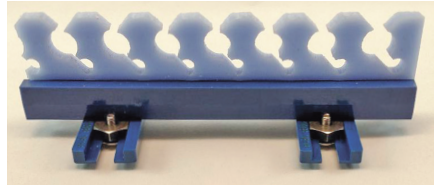
4", Five 5mm & 10mm Double Openings and 2 Universal Wing Adapter Assemblies



SILICONE BAR WITH RADEL BAR & UNIVERSAL WING ADAPTER ASSEMBLIES

CP537207

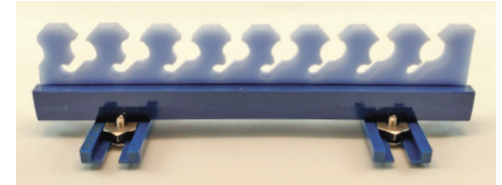
5", Six 5mm & 10mm Double Openings and 2 Universal Wing Adapter Assemblies



SILICONE BAR WITH RADEL BAR & UNIVERSAL WING ADAPTER ASSEMBLIES

CP537208

5", Seven 5mm & 10mm Double Openings and 2 Universal Wing Adapter Assemblies

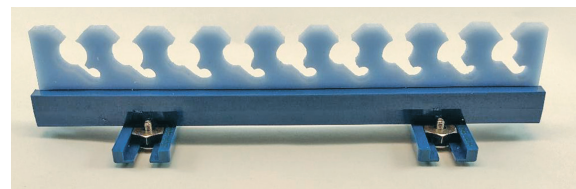


SILICONE BAR WITH RADEL BAR & UNIVERSAL WING ADAPTER ASSEMBLIES

CP537209

6", Eight 5mm & 10mm Double Openings and 2 Universal Wing Adapter Assemblies

THE CP537200 FAMILY OF SILICONE HOLDERS

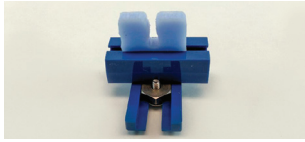


SILICONE BAR WITH RADEL BAR & UNIVERSAL WING ADAPTER ASSEMBLIES

CP537210

7", Nine 5mm & 10mm Double Openings and 2 Universal Wing Adapter Assemblies

UNIVERSAL SCOPE & INSTRUMENT PROTECTION SYSTEM



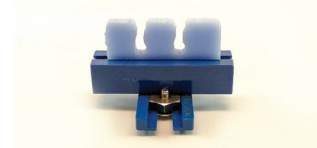
SILICONE BAR WITH RADEL BAR & UNIVERSAL WING ADAPTER ASSEMBLY

CP537301
1.5", One 3mm Opening and
1 Universal Wing Adapter Assembly



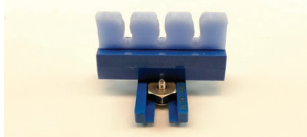
SILICONE BAR WITH RADEL BAR & UNIVERSAL WING ADAPTER ASSEMBLY

CP537302
1.5", Two 3mm Openings and
1 Universal Wing Adapter Assembly



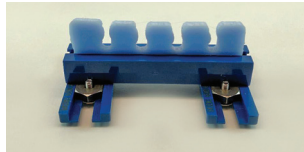
SILICONE BAR WITH RADEL BAR & UNIVERSAL WING ADAPTER ASSEMBLY

CP537303
2", Two 3mm Openings and
1 Universal Wing Adapter Assembly



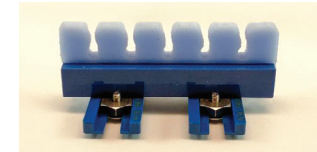
SILICONE BAR WITH RADEL BAR & UNIVERSAL WING ADAPTER ASSEMBLY

CP537304
2", Three 3mm Openings and
1 Universal Wing Adapter Assembly



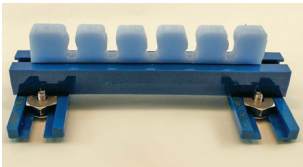
SILICONE BAR WITH RADEL BAR & UNIVERSAL WING ADAPTER ASSEMBLIES

CP537305
3", Four 3mm Openings and
2 Universal Wing Adapter Assemblies



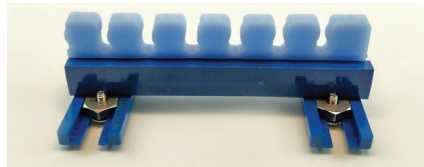
SILICONE BAR WITH RADEL BAR & UNIVERSAL WING ADAPTER ASSEMBLIES

CP537306
3", Five 3mm Openings and
2 Universal Wing Adapter Assemblies



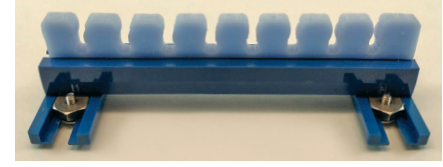
SILICONE BAR WITH RADEL BAR & UNIVERSAL WING ADAPTER ASSEMBLY

CP537307
4", Five 3mm Openings and
2 Universal Wing Adapter Assemblies



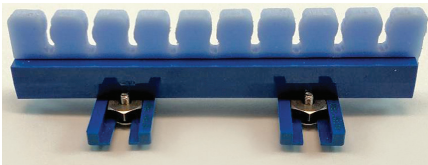
SILICONE BAR WITH RADEL BAR & UNIVERSAL WING ADAPTER ASSEMBLIES

CP537308
4", Six 3mm Openings and
2 Universal Wing Adapter Assemblies



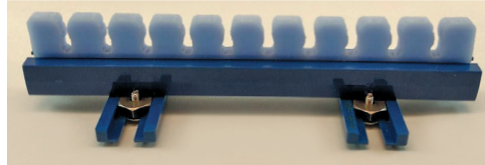
SILICONE BAR WITH RADEL BAR & UNIVERSAL WING ADAPTER ASSEMBLIES

CP537309
5", Eight 3mm Openings and
2 Universal Wing Adapter Assemblies



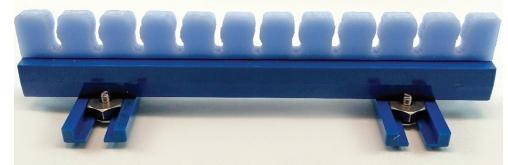
SILICONE BAR WITH RADEL BAR & UNIVERSAL WING ADAPTER ASSEMBLY

CP537310
5", Nine 3mm Openings and
2 Universal Wing Adapter Assemblies



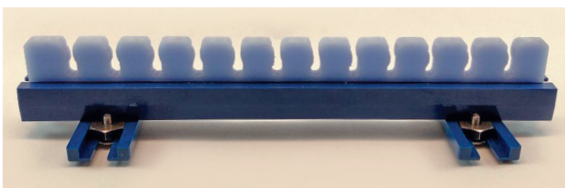
SILICONE BAR WITH RADEL BAR & UNIVERSAL WING ADAPTER ASSEMBLIES

CP537311
6", Ten 3mm Openings and
2 Universal Wing Adapter Assemblies



SILICONE BAR WITH RADEL BAR & UNIVERSAL WING ADAPTER ASSEMBLIES

CP537312
6", Eleven 3mm Openings and
2 Universal Wing Adapter Assemblies



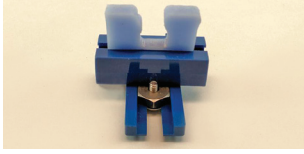
SILICONE BAR WITH RADEL BAR & UNIVERSAL WING ADAPTER ASSEMBLIES

CP537313
7", Twelve 3mm Openings and
2 Universal Wing Adapter Assemblies



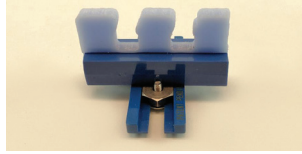
THE CP537300 FAMILY OF SILICONE HOLDERS

UNIVERSAL SCOPE & INSTRUMENT PROTECTION SYSTEM



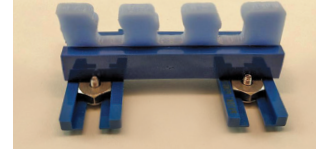
SILICONE BAR WITH RADEL BAR & UNIVERSAL WING ADAPTER ASSEMBLY

CP537401
1.5", One 10mm Opening and
1 Universal Wing Adapter Assembly



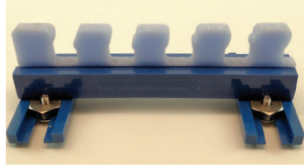
SILICONE BAR WITH RADEL BAR & UNIVERSAL WING ADAPTER ASSEMBLY

CP537402
2", Two 10mm Openings and
1 Universal Wing Adapter Assembly



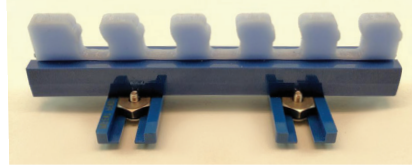
SILICONE BAR WITH RADEL BAR & UNIVERSAL WING ADAPTER ASSEMBLIES

CP537403
3", Three 10mm Openings and
2 Universal Wing Adapter Assemblies



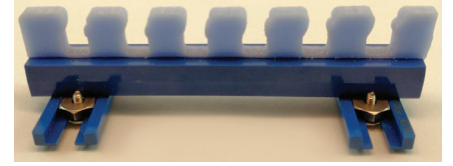
SILICONE BAR WITH RADEL BAR & UNIVERSAL WING ADAPTER ASSEMBLIES

CP537404
4", Four 10mm Openings and
2 Universal Wing Adapter Assemblies



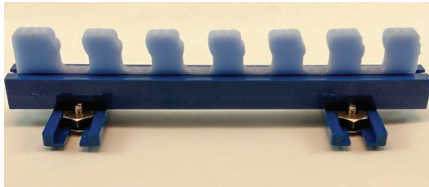
SILICONE BAR WITH RADEL BAR & UNIVERSAL WING ADAPTER ASSEMBLIES

CP537405
5", Five 10mm Openings and
2 Universal Wing Adapter Assemblies



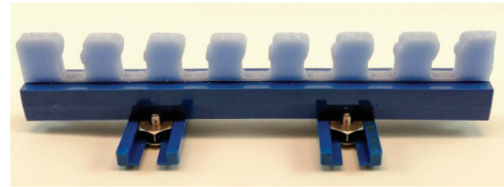
SILICONE BAR WITH RADEL BAR & UNIVERSAL WING ADAPTER ASSEMBLIES

CP537406
5", Six 10mm Openings and
2 Universal Wing Adapter Assemblies



SILICONE BAR WITH RADEL BAR & UNIVERSAL WING ADAPTER ASSEMBLIES

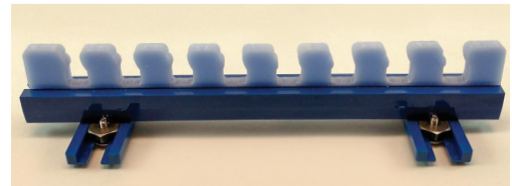
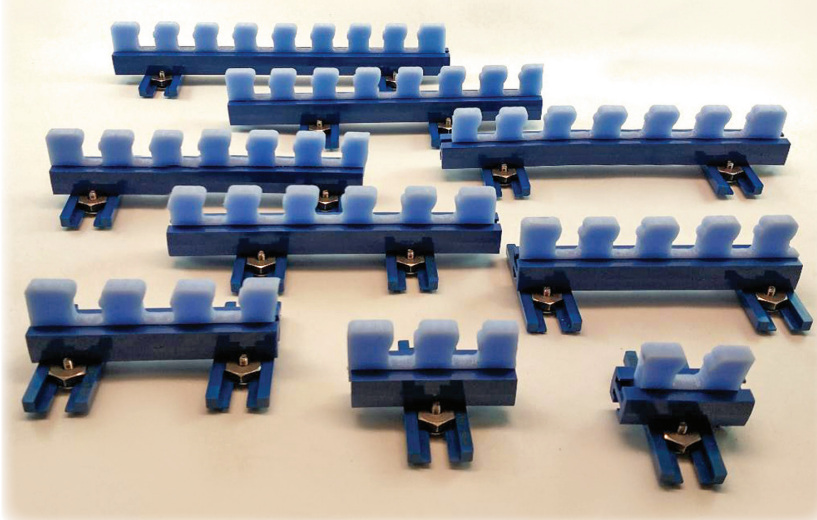
CP537407
6", Six 10mm Openings and
2 Universal Wing Adapter Assemblies



SILICONE BAR WITH RADEL BAR & UNIVERSAL WING ADAPTER ASSEMBLIES

CP537408
6", Seven 10mm Openings and
2 Universal Wing Adapter Assemblies

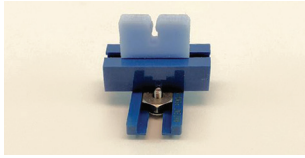
THE CP537400 FAMILY OF SILICONE HOLDERS



SILICONE BAR WITH RADEL BAR & UNIVERSAL WING ADAPTER ASSEMBLIES

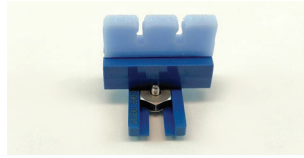
CP537409
7", Eight 10mm Openings and
2 Universal Wing Adapter Assemblies

UNIVERSAL SCOPE & INSTRUMENT PROTECTION SYSTEM



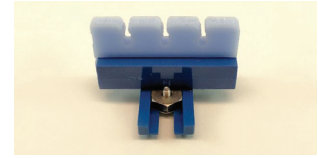
SILICONE BAR WITH RADEL BAR & UNIVERSAL WING ADAPTER ASSEMBLY

CP537501
1.5", One 3mm Opening and
1 Universal Wing Adapter Assembly



SILICONE BAR WITH RADEL BAR & UNIVERSAL WING ADAPTER ASSEMBLY

CP537502
1.5", Two 3mm Openings and
1 Universal Wing Adapter Assembly



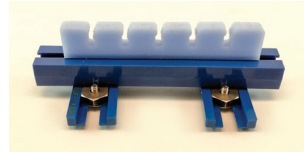
SILICONE BAR WITH RADEL BAR & UNIVERSAL WING ADAPTER ASSEMBLY

CP537503
2", Three 3mm Openings and
1 Universal Wing Adapter Assembly



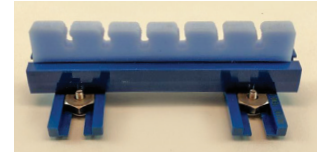
SILICONE BAR WITH RADEL BAR & UNIVERSAL WING ADAPTER ASSEMBLIES

CP537504
3", Four 3mm Openings and
2 Universal Wing Adapter Assemblies



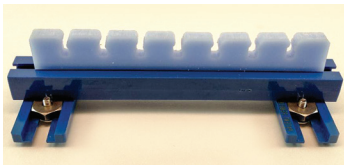
SILICONE BAR WITH RADEL BAR & UNIVERSAL WING ADAPTER ASSEMBLIES

CP537505
4", Five 3mm Openings and
2 Universal Wing Adapter Assemblies



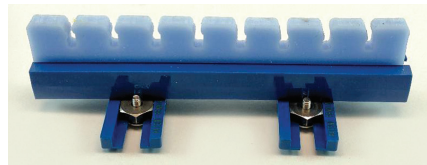
SILICONE BAR WITH RADEL BAR & UNIVERSAL WING ADAPTER ASSEMBLIES

CP537506
4", Six 3mm Openings and
2 Universal Wing Adapter Assemblies



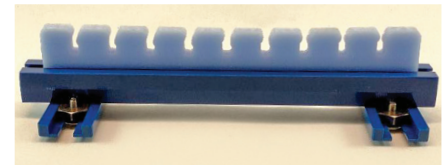
SILICONE BAR WITH RADEL BAR & UNIVERSAL WING ADAPTER ASSEMBLY

CP537507
5", Seven 3mm Openings and
2 Universal Wing Adapter Assemblies



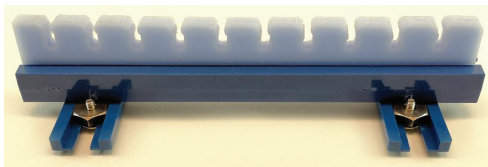
SILICONE BAR WITH RADEL BAR & UNIVERSAL WING ADAPTER ASSEMBLIES

CP537508
5", Eight 3mm Openings and
2 Universal Wing Adapter Assemblies



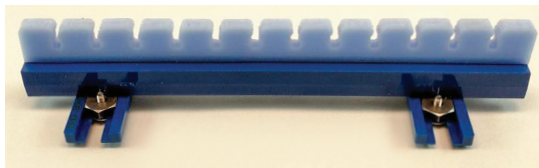
SILICONE BAR WITH RADEL BAR & UNIVERSAL WING ADAPTER ASSEMBLIES

CP537509
6", Nine 3mm Openings and
2 Universal Wing Adapter Assemblies



SILICONE BAR WITH RADEL BAR & UNIVERSAL WING ADAPTER ASSEMBLY

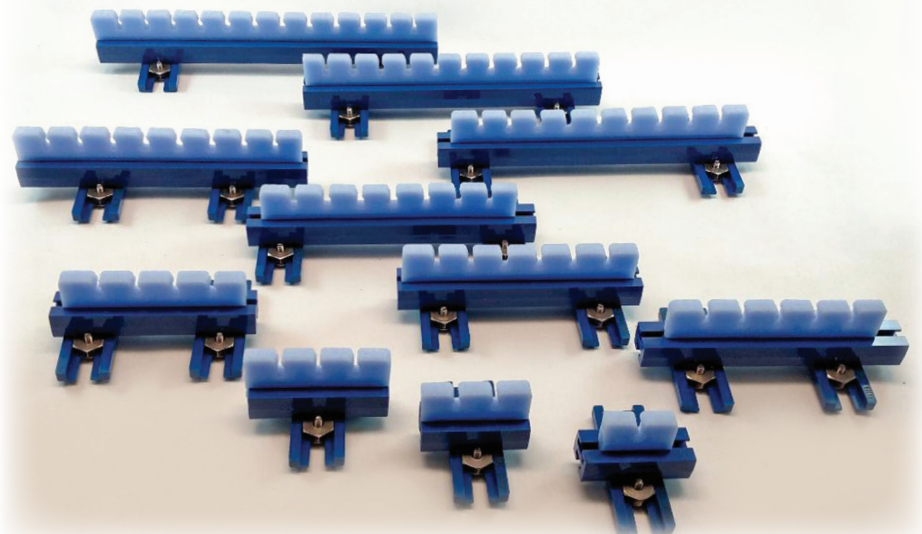
CP537510
6", Ten 3mm Openings and
2 Universal Wing Adapter Assemblies



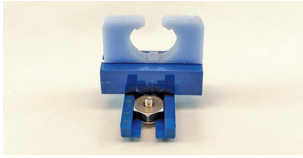
SILICONE BAR WITH RADEL BAR & UNIVERSAL WING ADAPTER ASSEMBLIES

CP537511
7", Twelve 3mm Openings and
2 Universal Wing Adapter Assemblies

THE CP537500 FAMILY OF SILICONE HOLDERS

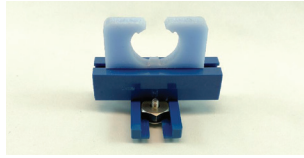


UNIVERSAL SCOPE & INSTRUMENT PROTECTION SYSTEM



SILICONE BAR WITH RADEL BAR & UNIVERSAL WING ADAPTER ASSEMBLY

CP535000
1.5", One 15mm Scope Holder, Open End and 1 Universal Wing Adapter Assembly



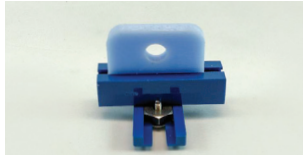
SILICONE BAR WITH RADEL BAR & UNIVERSAL WING ADAPTER ASSEMBLY

CP535001
2", One 15mm Scope Holder, Open End and 1 Universal Wing Adapter Assembly



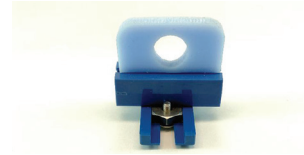
SILICONE BAR WITH RADEL BAR & UNIVERSAL WING ADAPTER ASSEMBLY

CP535100
1.5", One 8mm Scope Holder, Closed End and 1 Universal Wing Adapter Assembly



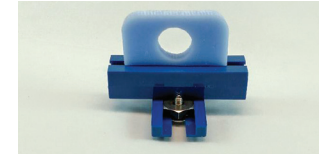
SILICONE BAR WITH RADEL BAR & UNIVERSAL WING ADAPTER ASSEMBLY

CP535101
2", One 8mm Scope Holder, Closed End and 1 Universal Wing Adapter Assembly



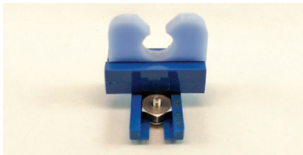
SILICONE BAR WITH RADEL BAR & UNIVERSAL WING ADAPTER ASSEMBLY

CP535200
1.5", One 12mm Scope Holder, Closed End and 1 Universal Wing Adapter Assembly



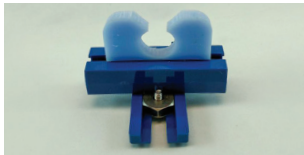
SILICONE BAR WITH RADEL BAR & UNIVERSAL WING ADAPTER ASSEMBLY

CP535201
2", One 12mm Scope Holder, Closed End and 1 Universal Wing Adapter Assembly



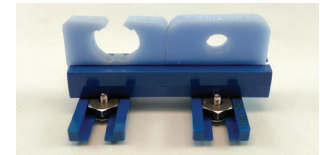
SILICONE BAR WITH RADEL BAR & UNIVERSAL WING ADAPTER ASSEMBLY

CP535300
1.5", One 12mm Scope Holder, Open End and 1 Universal Wing Adapter Assembly



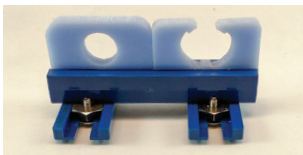
SILICONE BAR WITH RADEL BAR & UNIVERSAL WING ADAPTER ASSEMBLY

CP535301
2", One 12mm Scope Holder, Open End and 1 Universal Wing Adapter Assembly



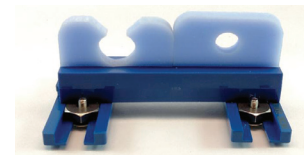
SILICONE BARS WITH RADEL BAR & UNIVERSAL WING ADAPTER ASSEMBLIES

CP535510
3", One 15mm Scope Holder, Open End, and One 8mm Scope Holder, Closed End and 2 Universal Wing Adapter Assemblies



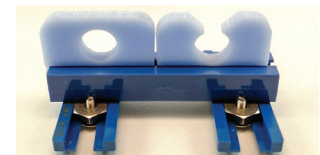
SILICONE BARS WITH RADEL BAR & UNIVERSAL WING ADAPTER ASSEMBLIES

CP535511
3", One 12mm Scope Holder, Closed End, and One 15mm Scope Holder, Open End and 2 Universal Wing Adapter Assemblies



SILICONE BARS WITH RADEL BAR & UNIVERSAL WING ADAPTER ASSEMBLIES

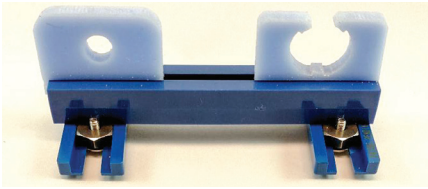
CP535512
3", One 12mm Scope Holder, Open End, and One 8mm Scope Holder, Closed End and 2 Universal Wing Adapter Assemblies



SILICONE BARS WITH RADEL BAR & UNIVERSAL WING ADAPTER ASSEMBLIES

CP535513
3", One 12mm Scope Holder, Closed End, and One 12mm Scope Holder, Open End and 2 Universal Wing Adapter Assemblies

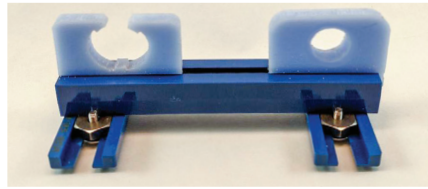
UNIVERSAL SCOPE & INSTRUMENT PROTECTION SYSTEM



SILICONE BARS WITH RADEL BAR & UNIVERSAL WING ADAPTER ASSEMBLIES

CP535520

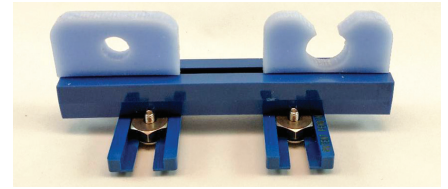
4", One 8mm Scope Holder, Closed End, and One 15mm Scope Holder, Open End and 2 Universal Wing Adapter Assemblies



SILICONE BARS WITH RADEL BAR & UNIVERSAL WING ADAPTER ASSEMBLIES

CP535521

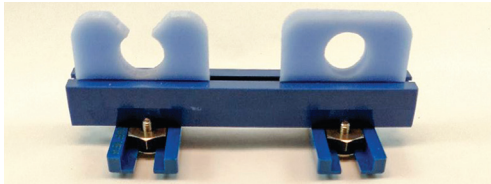
4", One 15mm Scope Holder, Open End, and One 12mm Scope Holder, Closed End and 2 Universal Wing Adapter Assemblies



SILICONE BARS WITH RADEL BAR & UNIVERSAL WING ADAPTER ASSEMBLIES

CP535522

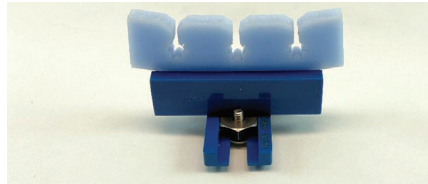
4", One 8mm Scope Holder, Closed End, and One 12mm Scope Holder, Open End and 2 Universal Wing Adapter Assemblies



SILICONE BARS WITH RADEL BAR & UNIVERSAL WING ADAPTER ASSEMBLIES

CP535523

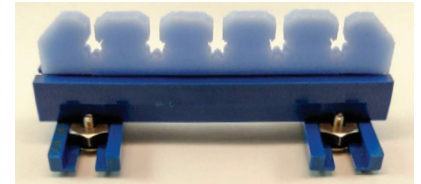
4", One 12mm Scope Holder, Open End, and One 12mm Scope Holder, Closed End and 2 Universal Wing Adapter Assemblies



SILICONE BAR WITH RADEL BAR & UNIVERSAL WING ADAPTER ASSEMBLY

CP251300

2", Three 5.5mm Openings, and 1 Universal Wing Adapter Assembly



SILICONE BAR WITH RADEL BAR & UNIVERSAL WING ADAPTER ASSEMBLIES

CP461500

4", Five 5.5mm Openings and 2 Universal Wing Adapter Assemblies



STAINLESS STEEL MESH BASKETS

SteriBest® Stainless Steel Mesh Baskets are ideal for cleaning surgical instruments in small to large sizes and quantities. Made with durable 300 series medical grade stainless steel to withstand repeated washings. Designed to contain a wide variety of instruments during washing, sterilization, transportation and storage. Handles flip easily into place for transporting baskets for sterilization. Baskets are available in a variety of sizes and depths. Use with your preferred style of **SteriBest® Instrument Stringers** to organize and keep your instruments open during sterilization.

- Durable 300 series stainless steel frames and mesh.
- Frames are 1/4" with 0.9mm wire mesh.
- Four sizes available.
- Stackable with flip handles.



STAINLESS STEEL MESH BASKET SQUARE

404901
9.0" x 9.0" x 2.0"



STAINLESS STEEL MESH BASKET

404902
18.0" x 9.0" x 3.0"



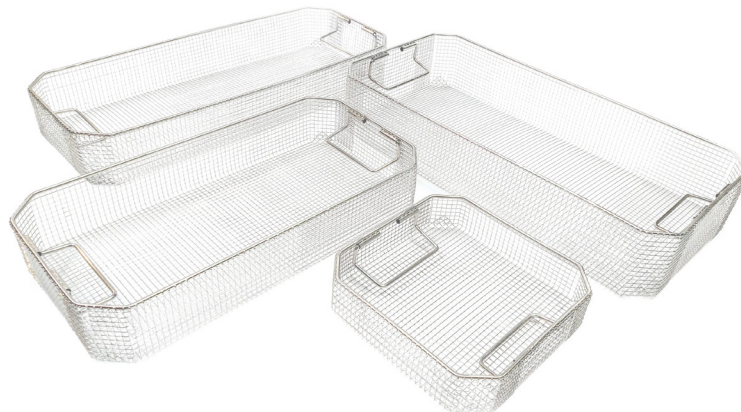
STAINLESS STEEL MESH BASKET

404903
22.0" x 9.0" x 3.0"



STAINLESS STEEL MESH BASKET

404904
22.0" x 10.5" x 4.0"





INSTRUMENT ENZYMATIC CLEANING SOLUTION



INSTRUMENT ENZYMATIC CLEANING SOLUTION CONCENTRATE

REC128
1 Gallon Bottle With Pump

RICA® Instrument Enzymatic Cleaning Solution

Concentrate, REC128, is a second generation “high level” enzymatic formulation specifically designed to break down the structure of protein soils and increase their solubility. The enzymes attack the proteins (blood, saliva, and tissue) at the molecular level and help break them apart (dissolve the peptide bonds), making this material more easily rinsed away prior to cleaning and sterilization. Using this concentrate in an ultrasonic cleaner gives an extra boost of cleaning through a chemical reaction as well as the ultrasonic wave action, leaving your surgical instruments cleaner prior to sterilization.

- Penetrates those hard to reach places in surgical instruments to help dissolve, loosen and flush blood, protein soils, and tissue.
- Helpful in eliminating the need for hand scrubbing of instruments, reducing the risk of exposure to personnel while handling instruments.
- Non-corrosive with a neutral pH for safe cleaning of instruments.
- Fresh clean scent.
- Can be used as an instrument pre-soak prior to cleaning instruments. Use warm water for this purpose.
- Excellent concentrate to use in ultrasonic cleaners.
- Fast acting, specialized enzymatic cleaner.
- Concentrated – mix 1 oz. of solution to 1 gallon of warm water.
- Comes with a complimentary 1 oz. metering pump. One stroke = 1 oz. of concentrate.
- Manufactured in a cGMP compliant facility for batch-to-batch consistency.
- Economical and easy to use.



Instruments in Enzymatic Cleaning Solution



COTTON TERRY CLOTH AUTOCLAVE GLOVES

Designed to protect hands when removing hot racks and trays from autoclaves, these soft cotton, terry cloth gloves absorb moisture and provide long-lasting comfort and protection. Made from ultra thick 100% cotton, they provide hand and wrist protection up to 250°F. They are launderable and maintain their flexibility and comfort. Available in natural color with black contrast edge. One size fits all hands.

- 100% cotton, terry cloth.
- Absorbs moisture.
- Heat resistant, up to 250°F.
- Launderable.
- Natural color with black contrast edge.
- Available in 15.5" and 17.0" lengths.
- One size fits all hands.



COTTON TERRY CLOTH AUTOCLAVE GLOVES

ACG15
15.5" length to cover the wrist



COTTON TERRY CLOTH AUTOCLAVE GLOVES

ACG17
17.0" length for protection up to the elbow

HOW TO ORDER

To place an order to purchase any RICA products or to inquire about availability and current pricing, please contact your local sales representative, visit RICA's websites at www.ricasurgical.com, or contact RICA's office located in Schiller Park:

RICA Surgical Products, Inc.
9207 Ivanhoe Street
Schiller Park, Illinois 60176
1-800-889-3218
Fax: 847-671-5690

PAYMENTS

RICA Surgical Products accepts Mastercard, VISA, American Express, and Discover credit cards for payment of invoices. Payment terms are 30 days net from the date of invoice. An interest charge of 1-1/2% per month may be assessed on past due invoices.

Make payment payable to RICA Surgical Products and send payment to:

RICA Surgical Products, Inc.
Accounts Receivable
9207 Ivanhoe Street
Schiller Park, IL 60176

RETURN GOODS POLICY

All returns must be pre-approved by RICA Surgical Products, which can be done by contacting RICA at 1-800-889-3218. Authorized returns must be made within thirty (30) days after receipt of the order. Instruments must be unused and in the original packaging. There will be a 20% restocking fee on returns over 30 days but before 90 days, a 30% restocking fee on returns over 90 days but before 120 days. No returns will be accepted 120 days after receipt of shipment. Sterile products, which have been opened, returned out of the original package or returned after the sterile expiration date are not returnable. Return goods must be shipped freight prepaid to RICA Surgical Products, Inc., 9207 Ivanhoe Street, Schiller Park, Illinois 60176 and be accompanied by a copy of the original packing list and/or invoice. All items are subject to RICA's inspection and acceptance.

The RICA office is staffed from 8:00 a.m. to 4:30 p.m. CST. Orders are shipped via United Parcel Service ground service. The actual shipping charges will be added to the invoiced amount. If you require expedited delivery, please let us know when you place your order.

STERIBEST® PRODUCT LIMITED WARRANTY

All SteriBest® products are covered by RICA Surgical Products, Inc. limited warranty. RICA Surgical Products, Inc. (RICA) warrants this product against defects in material or workmanship.

RICA will repair or replace the defective product at its option if returned within the warranty period to our service facility. This warranty is in lieu of all other warranties, expressed or implied, including, but not limited to any implied warranty of merchantability or fitness for a particular purpose. The remedies provided herein are the buyer's sole and exclusive remedies. RICA shall not be liable for any direct, indirect, special, incidental, or consequential damages, whether based on contract, tort, or any legal theory. In the United States, some states do not allow exclusion or limitation of incidental or consequential damages, so the limitations above may not apply to you. This warranty gives you specific legal rights, and you may also have other rights which vary from state to state. This section does not limit liability for bodily injury of a person.

RICA's entire liability for any defective product shall in no event exceed the purchase price for the defective product. This limitation applies even if RICA cannot or does not repair or replace any defective product and your exclusive remedy fails of its essential purpose. See the RICA website for full details of limited warranty. Contact RICA Surgical Products, Inc. for more information.



Surgical & Sterilization

PRODUCTS & SYSTEMS



9207 Ivanhoe Street
Schiller Park, IL 60176

847-671-5600
1-800-889-3218
Fax: 847-671-5690

www.ricasurgical.com
www.steribest.com

STERIBEST™

SteriBest™ is a Registered Trademark of RICA Surgical Products, Inc., an FDA Registered Facility since 1984. Registration No. 1419732
RICA Surgical Products, Inc. Schiller Park, IL 60176 (800) 889-3218 www.ricasurgical.com
*Universal Wing Adapter Assembly is Patent Pending.
©2020 RICA Surgical Products, Inc.
PRINTED IN THE U.S.A.

FDA Registered Facility

